



# **Cordula Consulting Pty Ltd**

## **Company Profile**

December 2006





## Foreword

Cordula Consulting Pty Ltd is a diverse company providing innovation to the construction and property development industry. We are committed to helping our clients thrive in a changing world by becoming a leader in innovative consulting. Our portfolio is built around innovation in:

- Structural Engineering,
- Project Management and
- Property Development Solutions.

### Why Cordula Consulting?

Architects, builders, developers and property investors seek innovation, reliability and comfort from an organisation they can trust. They require comprehensive advice with timely delivery.

That's where Cordula Consulting comes in. Our company structure and dedication to corporate governance drives our motivation to think outside the square. We encourage organisations to avoid seeking the single 'correct' answer. Instead we help them to focus on understanding the true nature of the issues being faced and then decide on the appropriate way forward.

### Balance

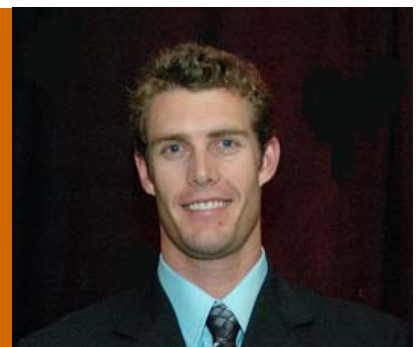
Balance means building a successful company without sacrificing customer trust and that in essence is what Cordula Consulting is all about, growing stronger as a team.

A handwritten signature in orange ink, appearing to read 'G. Matthews'.

**Glenn Matthews**  
Managing Director

**Glenn A. Matthews**  
BE MIEAust GAICD

“The new year will bring with it a diversity of projects within both Australia and New Zealand. The challenges and goals set for 2007 will allow us to pave a new direction for consulting to our industry.”



# Contents

Corporate Structure	4
Professional Team	4
Corporate Governance	4
Completed Projects	5
Upcoming Projects	7
Contact Details	8

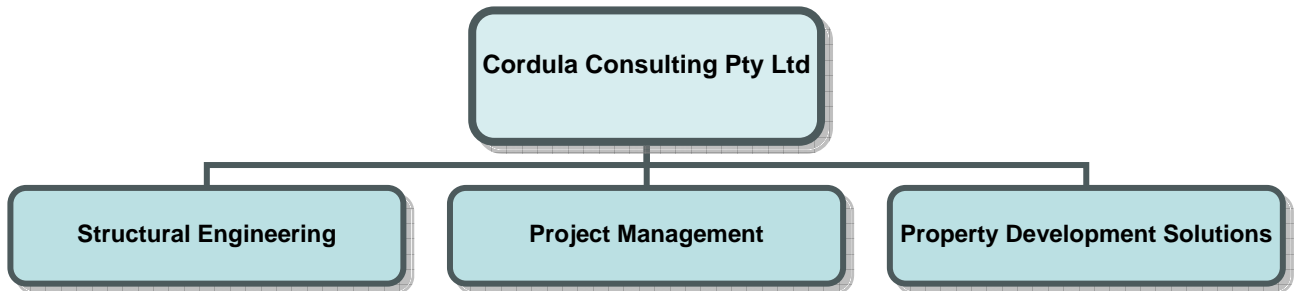


"I think it is an immutable law in business that words are words, explanations are explanations, promises are promises - but only performance is reality."

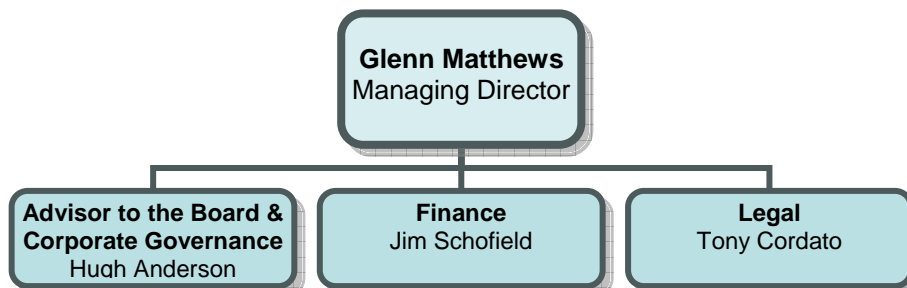
Harold Geneen



## Corporate Structure



## Professional Team



## Corporate Governance

It is Cordula Consulting's policy to achieve best practice in our standards of business integrity for all our operations within Australia and around the world. This includes a commitment to maintaining the highest standards of corporate governance and ethics throughout the company.

With the growth in Cordula Consulting its commitment to create value (through entrepreneurship, innovation, development and exploration) also grows and especially its greater need to provide accountability and control systems commensurate with the risks involved.

## Completed Projects



### **Castlecrag Residence**

This residence within Castlecrag is a great example of both sophisticated architecture and sleek structural design. We carried out the structural design and were involved heavily in on-site corrosion protection of the exposed steelwork.

Client: Mr. & Mrs. Choy  
Architect: Alex Popov Architects  
Project Value: \$4.5 Million



### **ANSTO Front Entrance**

Yet another project where our experience in teaming with government departments has yielded an impressive result. The project at the ANSTO facility in Lucas Heights consisted of a new administration building (pictured), maintenance storage shed, architectural awnings, security stop points, security barriers and staff parking facilities. We carried out the structural engineer design throughout the project.

Client: ANSTO  
Architect: Collard Maxwell Earnshaw  
Project Value: \$7.9 Million



### **Broulee Residence**

This project was a great display of ESD principals within residential construction. The concrete slab of this residence was entirely formed up using recycled car tyres. We continually strive to add value to project whilst maintaining the generic principals of ESD, and the proof is in the pudding.

*Architect: Habitation*  
*Project Value: \$0.3 Million*

## Completed Projects



### **Corrimal School**

The most recent expansion of Corrimal School consisted of a new gymnasium, canteen, covered walkways, and renovation to existing administration buildings. We provided structural services and added this school to the long list of schools designed by our senior staff.

Client: Department of Commerce

Architect: DRA Architects

Project Value: \$4.5 Million



### **Jindabyne School – Stages 1 & 2**

Jindabyne Central School has seen an explosion in student numbers, and the expansion of the school is a direct result. Stage 1 added a new home base and a library. Stage 2 added two new home bases and main hall. We provided structural engineering services throughout the project.

Client: Department of Commerce

Architect: DRA Architects

Project Value: \$9.0 Million (total)



### **Corpus Christi – Stages 1 & 2**

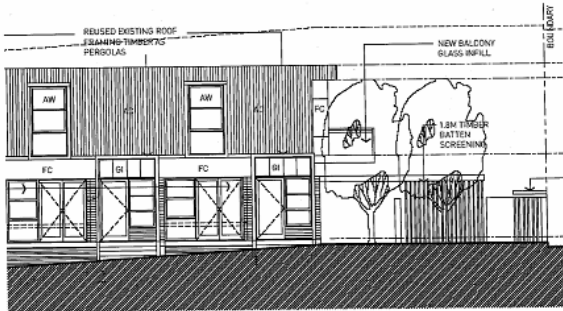
Significantly different than public schools, this architecturally influences catholic school has met the necessity of the Illawarra. We provided structural engineering services for the first 2 stages of the school.

Client: Catholic Education Office

Architect: Glanville Architects

Project Value: \$9.0 Million (total)

## Upcoming Projects



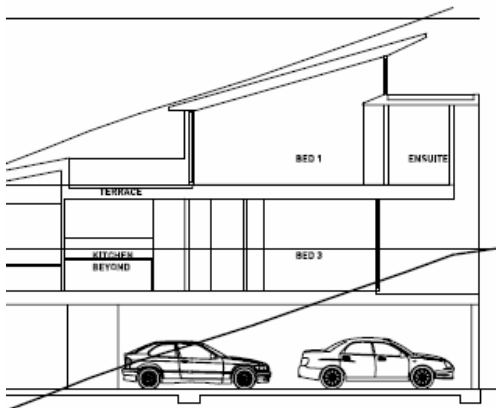
### 7 Regatta Ave, Lilli Pilli

A small, boutique development in the South of Sydney. This development has aimed to maintain accommodation for the elderly and disabled within 50% of the development. The development adopts strong ESD principals by recycling existing building materials, and water reticulation. Cordula Consulting are providing the structural engineering and development management services for the project.

Client: Gamma Developments Pty Ltd

Architect: Habitation Pty Ltd

Project Value: \$1.5 Million



### 40 Lismore St, Wanaka New Zealand

Bringing Australian architecture to New Zealand, this development will be of the highest quality and captures the stunning views of snow capped mountains and glistening Lake Wanaka. Cordula Consulting are providing the structural engineering and development management services for the project.

Client: Coles Jackson Properties

Architect: Habitation Pty Ltd

Project Value: \$5.0 million



### NSW Regional Subdivision

Consisting of 43 lots this development poses to bring a new style of living to central NSW. Cordula Consulting are carrying out the preliminary investigation and feasibility study for the development.

Client: Andana Trust

Architect: N/A

Project Value: \$15.0m



## Contact Details

Phone: (61 2) 9527 1959

Mobile: 0417 246 587

Email: [admin@cordula.com.au](mailto:admin@cordula.com.au)

Mail: PO Box 140 Miranda  
NSW Australia 1490

**[cordula.com.au](http://cordula.com.au)**